

Full Automatic ESD Tester

HED-S5000R series

- Ultra-low Parasitic Inductance & Capacitance
- Conforms to ESDA_JEDEC JS-001(AEC), JEITA standards



Hanwa Electronic Ind. Co., Ltd.

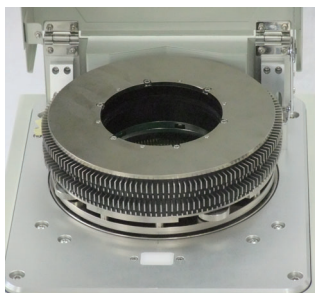
Specification

Testing under any world standard is possible

This system's uniquely short discharge circuit is made possible by its original mechanical design. The short circuit minimizes the influence of inductance and capacitance on the data. Further, the use of a single circuit ensures data stability for each device pin tested.

Test pins	Max. 256 pins
Pulse voltage	HBM : $\pm 10V - \pm 8000V$ MM, 10PF : $\pm 10V - \pm 4000V$
Voltage step	Min. 5V
Zap number	1-99 times (Max. 65535)
Zap interval time	0.1 - 9.9s
Charging voltage accuracy	1% \pm 10V
Measurement voltage (Vf)	$\pm 40V$ (step 0.1V)
Accuracy of current measurement	1% \pm (1/500FS+10nA)
Outer dimensions	545mm(W) \times 350mm(D) \times 340mm(H)
Weight	25kg
Control	Windows or Stand alone
AC Voltage	100 -240V/5A

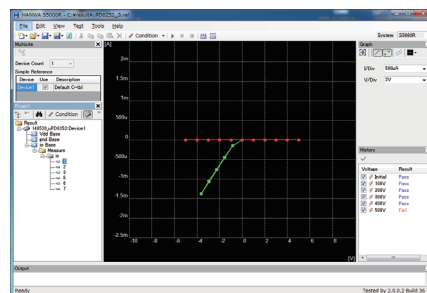
Measurement result screen



Mechanical GND system



Control panel



Graph mode

Features

Single discharging circuit

New, specialized mechanical GND setting
Ultra-low parasitic inductance & capacitance

Max 256 pins

Can be used with various standard waveforms

This high-quality system conforms to a number of international standards, including ESDA_JEDEC JS-001(AEC), JEITA standards.

Can be used with latch-up testing

Easy and reliable operation

Much shorter testing procedure

This device uses mercury relays.
If you have any questions, please contact us.



Hanwa Electronic Ind. Co., Ltd.

689-3, Ogaito, Wakayama, 649-6272 JAPAN

TEL:+81-73-477-4435 FAX:+81-73-477-3445

URL:<https://www.hanwa-ei.co.jp>

■ Agency